



WERKMAN CIRCLE

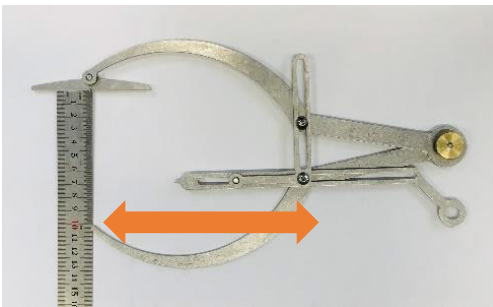


Identification of the center of rotation of the coffin joint.



Ratio Mean

The Ratio Mean Divider alters the relevant distances measured based on a proportion 30:70. This is different to the well-known Golden Mean Divider. (1:1.61803398875)



Version 2

The new ratio circle can be moved precisely depending on the hoof size and adapt the relative size of the hoof.



Preparation

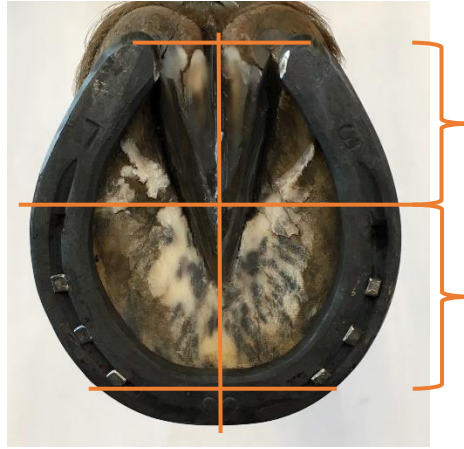
Position the Ratio Mean Divider onto the coronary band of the palmar / plantar heel bulbs as well as the dorsal midline. The middle divider will point to the external reference of the centre of rotation of the coffin joint. Mark the point using the permanent red pen provided.





Next Steps

A line from the reference point is drawn perpendicularly to the ground surface using the set square provided, on both the lateral and medial side of the hoof. The two solar reference points are then joined up.



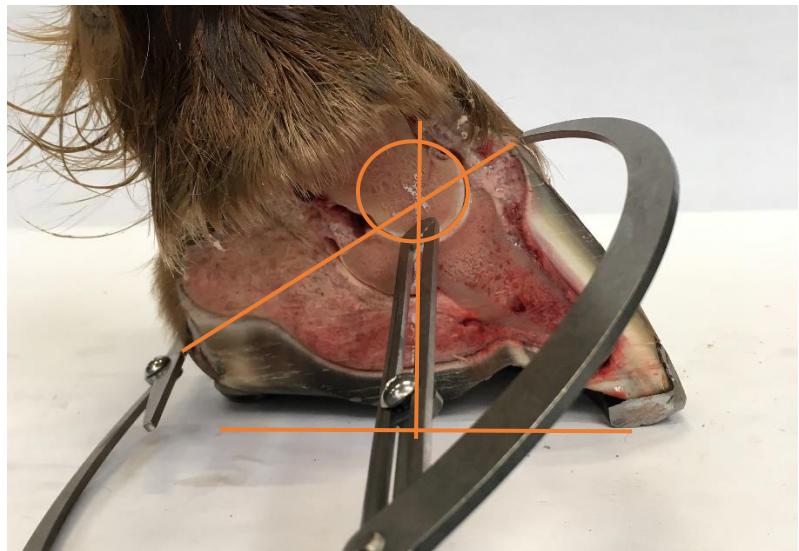
The Ratio Mean Divider aids a quick and accurate assessment of the proportions (lengths to widths) in the barefoot as well as shod hoof.

Ideal Ratios

The ideal lengths from the breakover to the centre line and to the palmar / plantar end in relation to the centre of rotation of the coffin joint in a balanced and well trimmed hoof should be 50:50.

Verifications

After shoeing the position of the shoe can be checked using all relevant reference points.



This control was possible on a hoof preparation!